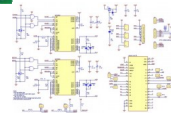
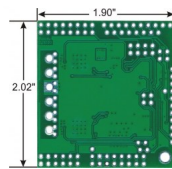
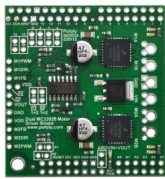


Pololu Dual MC33926 Motor Driver Shield for Arduino



Rating: Not Rated Yet

Price:

Variant price modifier:

Price with discount: 3,350.00 PKR

Salesprice with discount:

Sales price: 3,350.00 PKR

Discount:

Tax amount:

[Ask a question about this product](#)

Description

This motor driver shield and its corresponding Arduino library make it easy to control two bidirectional, brushed DC motors with an [Arduino](#) or Arduino clone. The board features a pair of Freescale MC33926 motor drivers, which operate from 5 to 28 V and can deliver a continuous 3 A per channel, and includes current sense circuitry, protection resistors, a FET for reverse battery protection, and logic gates to reduce the required number of I/O pins. It ships fully populated with its SMD components, including the two MC33926 ICs, as shown in the picture to the right; stackable Arduino headers and terminal blocks for connecting motors and motor power are included but are not soldered in (see the Included Hardware section below).

This versatile motor driver is intended for a wide range of users, from beginners who just want a plug-and-play motor control solution for their Arduinos (and are okay with a little soldering) to more advanced users who want a [dual MC33926 carrier](#) that requires fewer I/O pins to control. The Arduino pin mappings can all be customized if the defaults are not convenient, and the simplified MC33926 control lines are broken out along the left side of the board, providing a convenient interface point for other microcontroller boards (see the right connection diagram below). This versatility, along with an option to power the Arduino directly from the shield, sets this board apart from similar competing motor shields.

Reviews

There are yet no reviews for this product.